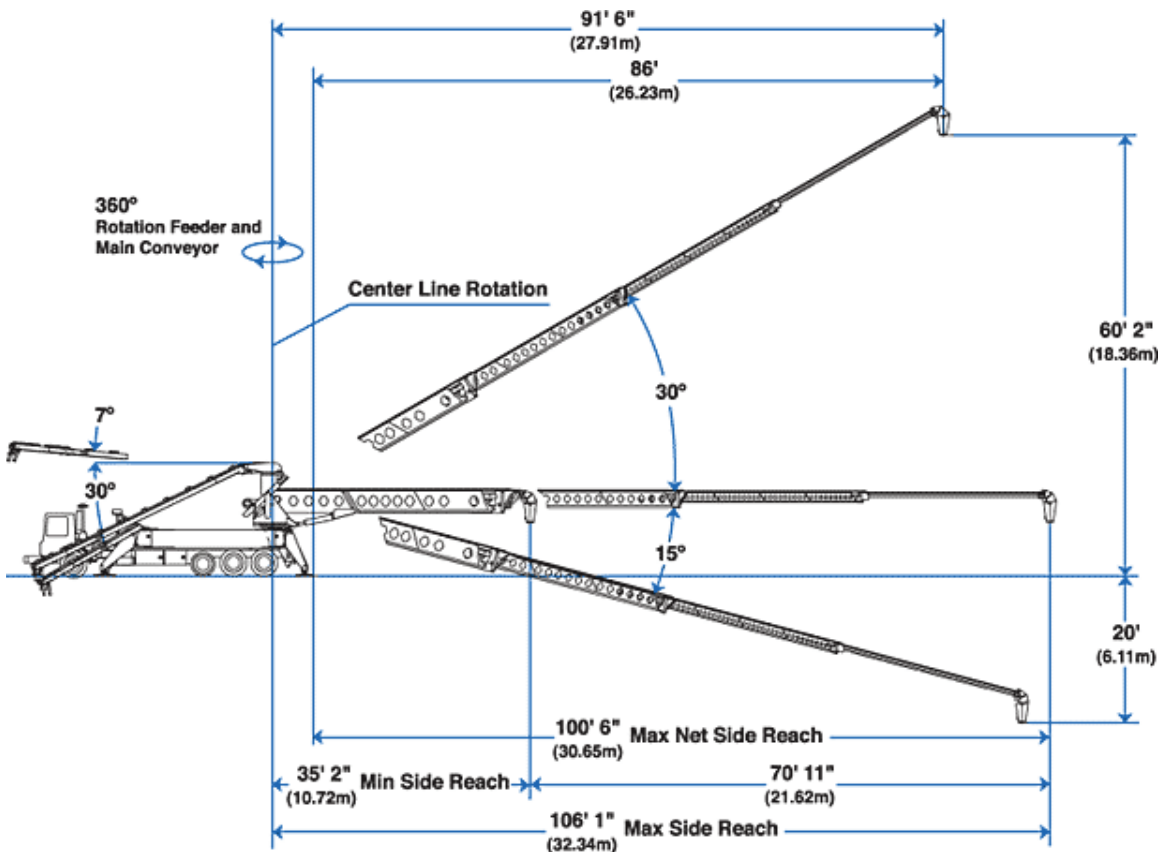


BLANCHET CONCRETE PUMPING^{LLC}

Putzmeister TB 110 Telebelt

Boom Reach



The TB 110 can place concrete at high volumes up to 360 yd³/hr (275m³/hr) and convey a wide variety of materials ranging from sand to 4" (100mm) rock. With its steel/aluminum truss and three aluminum sections, this four-section telescopic conveyor offers 106' 1" (32.34m) of horizontal reach. The unit can set up and operate under heights as low as 15' 9" (4.80m).